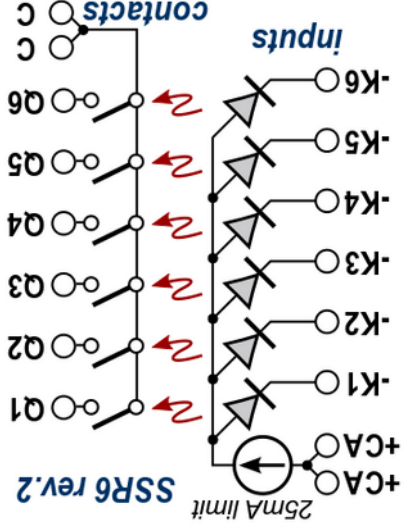


Azatrax Hex Solid State Relay Module, SSR6

This module has six solid state relays. Each relay has an LED input and a single normally-open (SPST-NO) output contact.

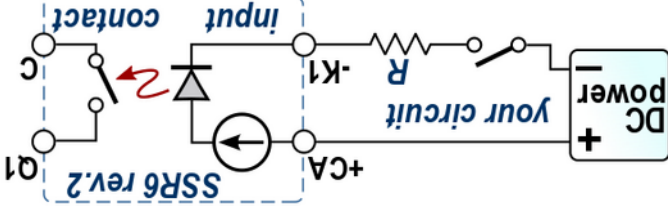
When DC current of 3 to 25 milliamps DC flows through the input LED, the output contact closes. When input current stops, the output contact opens.

Schematic Diagram of the Relay Module



- Input LEDs are common-anode
- Input current: 3 - 25 milliamps, each input.
- Contact rating: 350 milliamps (0.35 amp) max
- 30 v max AC or DC, each contact.
- Terminal connections: Terminal blocks have spring contacts. Strip the wire 3/8 inch (1 cm). Press the square button on the terminal block and insert the wire. Release the button, then pull the wire to be sure it is secure.

Example - Using one of the solid state relays:



Use of resistor R is optional for SSR rev. 2 and higher.

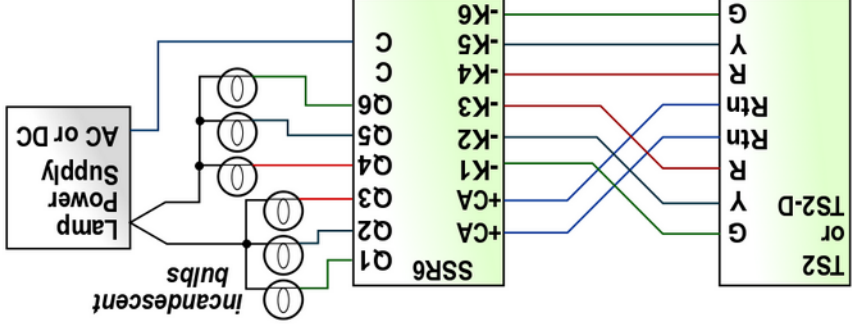
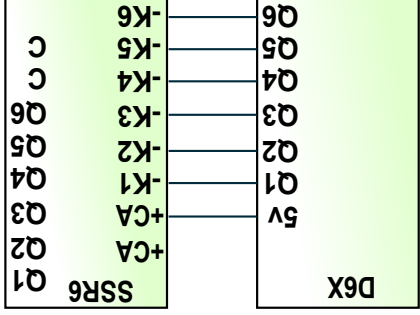
Application Examples

SSR6

SSR6 rev. 2 and later have on-board current limiting. Use of an external resistor is not required for rev. 2 and later.

Azatrax D6X and TS2 circuits already have built-in series resistors. When using the SSR6 with these Azatrax circuits, no other resistors are needed.

SSR6 used with an Azatrax D6X to increase the load capability of the D6X outputs:



SSR6 used with an Azatrax TS2 to operate block signals with incandescent bulbs.

A TS2 or TS2-D circuit by itself can only operate signals with LEDs.